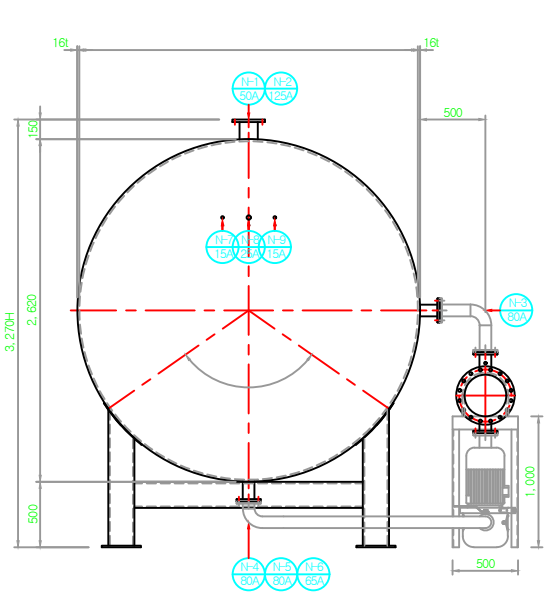


\* 승인이전 용량내 탱크 규격 변경 가능  
 \* 승인이전 노출의 규격 및 위치 변경 가능  
 \* 기초 콘크리트패드 설치시 수유차 시공  
 \* 탱크 본체 이외 제품은 전부 미포함

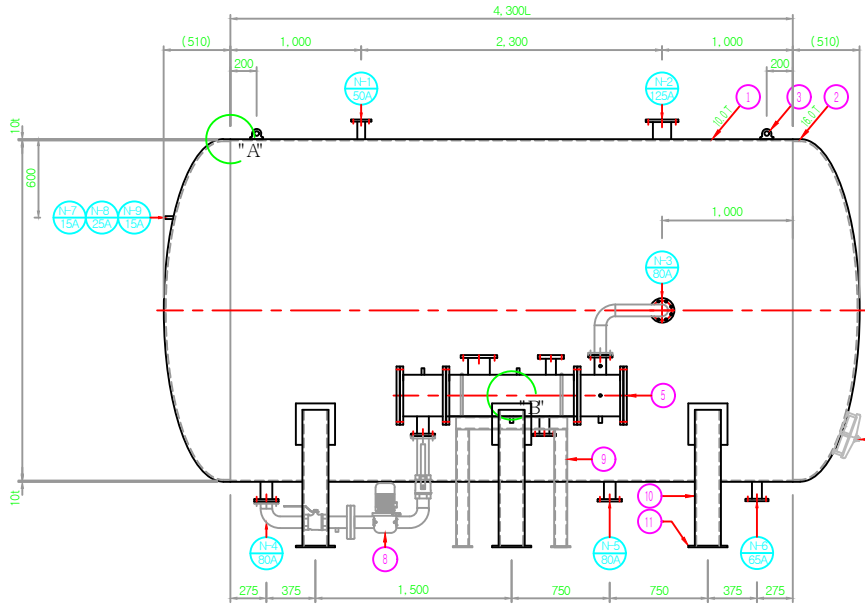
특기사항	
1. MATERIAL :	STS-304
2. INSULATION :	G/W 50T + 0.45T COLOR SHEET
3. PRODUCTION QUANTITY :	1 SET
4. TANK CAPACITY :	27,000 LIT
5. TEST PRESSURE :	SELF-WATER PRESSURE TEST
6. PAINT :	NONE
7. STANDARD :	ø2,620 x 4,300H (경판16.0T 동판10.0T)

NO.	DESCRIPTION	MAT'L	QTY	SIZE	REMARKS
1	SHELL PLATE	STS304	1	10.0T	동판
2	HEAD PLATE	STS304	2	16.0T	경판
3	LIFTING LUG	STS304	2	12.0T	
4	MANHOLE	STS304	1		
5	HEAT EXCHANGER	STS304	1	300A x 1,000L	
6	HEATING COIL	CI1220T-H	147		
7	BAFFLE PLATE	STS304	2	3.0T	
8	CONVECTION PUMP	STS304	1	80A x 2.2KW	
9	SUPPORT (EXCHANGER)	SS275	1 SET	=	
10	SUPPORT (TANK)	SS275	3 SET	H-BEAM 200x200x8t x12t	
11	BASE PLATE	SS275	4	300 x 300 x 12t	

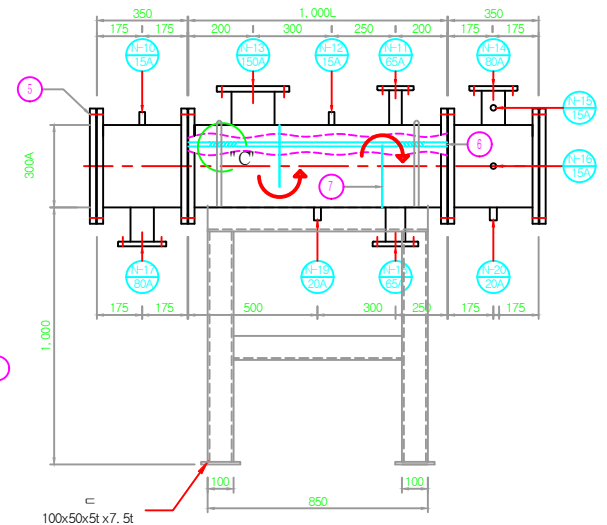
NOZZLE SCHEDULE FOR DETAILS						
MARK	SIZE	QTY	MAT'L	FINISHING	NAME	REMARK
N-1	50A	1	SS313	FLANGE	안전변	10S/10K
N-2	125A	1	SS313	FLANGE	급탕	10S/10K
N-3	80A	1	SS313	FLANGE	순환	10S/10K
N-4	80A	1	SS313	FLANGE	순환	10S/10K
N-5	80A	1	SS313	FLANGE	급수	10S/10K
N-6	65A	1	SS313	SOCKET	TANK OPEN	10S/10K
N-7	15A	1	STS304	SOCKET	압력계	10S/ -
N-8	25A	1	STS304	SOCKET	센서	10S/ -
N-9	15A	1	STS304	SOCKET	온도계	10S/ -
N-10	15A	1	STS304	SOCKET	순환	온도계 10S/ -
N-11	65A	1	SS313	FLANGE	안전변	10S/10K
N-12	15A	1	STS304	SOCKET	압력계	10S/ -
N-13	150A	1	STS304	FLANGE	스팀	10S/10K
N-14	80A	1	STS304	FLANGE	순환	10S/10K
N-15	15A	1	STS304	SOCKET	순환	압력계 10S/ -
N-16	15A	1	STS304	SOCKET	순환	온도계 10S/ -
N-17	80A	1	STS304	FLANGE	순환	10S/10K
N-18	65A	1	STS304	FLANGE	용축수	10S/10K
N-19	20A	1	STS304	SOCKET	스팀	10S/ -
N-20	20A	1	STS304	SOCKET	순환	10S/ -



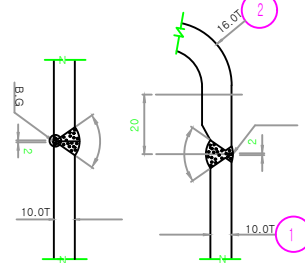
1 HOT WATER STORAGE TANK (Left)  
 SCALE : A3 : 1:1



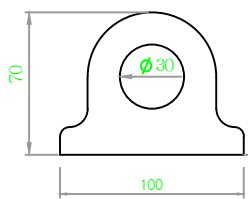
1 HOT WATER STORAGE TANK (FRONT)  
 SCALE : A3 : 1:1



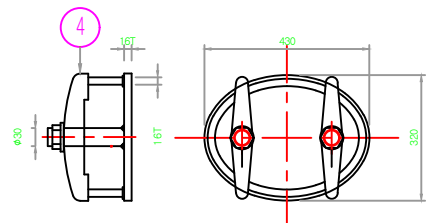
1 HEAT EXCHANGER DETAIL  
 SCALE : A3 : 1:1



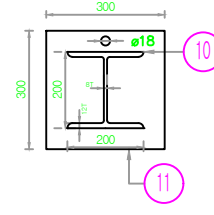
"A" SHELL/HEAD WELD DETAIL



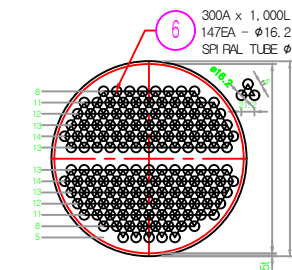
LIFTING LUG



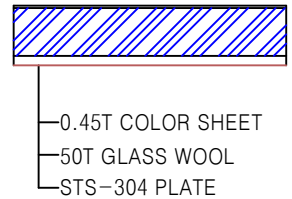
MANHOLE DETAIL



BASE PLATE



"C" SPIRAL TUBE DETAIL



INSULATION DETAIL

**주 서 흥**  
 본사 공장 충북 청주시 청원구 토성로  
 TEL : (043) 231-6876-7 / FAX : (043) 233-6877  
 E-mail : shwater01@mpas.com  
 Hbnpage : www.shwater.co.kr

**취급품목**

※ 패널탱크      라인닝탱크      원통형 원수 저장탱크 ※  
 ※ 온수저장탱크      탱크 경유 저장탱크      열교환기 교환기 ※  
 ※ 온수 가열기      헤더      기타 탱크류 ※

DATE	SCALE	DESIGNED BY	Kim. w. g	공사명
2023/05/26	N/S	DRAWN BY	Kim. w. g	밀양 지역상생 복합문화센터 건립공사
도면번호		CHECKED	kim. t. s	도면명
SH230526-01		PROEAFD BY	Lee. j. j	분리형급탕가열기 상세도